

Retrospective Study of Maxillofacial Traumatic Injury Pattern on Plastic Surgery Unit at Bali Mandara General Hospital

Grace Claudia¹, Putu Trisna Utami²

¹Medical Doctor, Faculty of Medicine Udayana University, Denpasar, Bali, Indonesia

²Plastic Surgeon, Department of Plastic Reconstructive and Aesthetic Surgery, Bali Mandara Regional Public Hospital, Denpasar, Bali, Indonesia

ABSTRACT

Introduction Trauma is a major cause of morbidity and mortality, often accompanied by maxillofacial injuries in a significant portion of patients. Maxillofacial trauma represents a serious public health problem and their epidemiology varies between populations. Bali Mandara General Hospital is a new government hospital operated in October 2017, that provides care for plastic surgery patients, including maxillofacial trauma patients. The current study aims to investigate the pattern of maxillofacial traumatic injuries, and management of maxillofacial traumatic injuries by our plastic surgery service.

Methods A hospital-based, single-centered study was conducted from January 1st, 2018 to December 31st, 2022 at Bali Mandara General Hospital. Medical records of maxillofacial patients undergoing surgical procedure were retrospectively reviewed Data is collected and analyzed using Microsoft Office Excel and SPSS Statistic version 26.

Results A total of 107 maxillofacial patients who received treatment for maxillofacial trauma in the departments during the study period were included; 76 (71.02%) are male and 31 (28.97%) female. The majority of patients belonged to the 21-30 years age group (27 patients, 25.23%). The mean age for the group was 32.26±17.31 years, ranging from 1 to 83 years. Soft tissue injuries (64; 29.63%) and maxilla fracture (35; 16.20%) were the two most common site of maxillofacial injuries. The most common associated injuries was upper extremity injuries (11; 30.56%), followed by lower extremity injuries (9; 25.00%). The most common surgical management were ORIF (61; 28.64%) and debridement (54; 25.35%).

Conclusion Young age and males were predominantly affected. Maxillary fracture was the most frequent maxillofacial fracture. Maxillofacial trauma was often associated with upper extremity injuries. ORIF was the most surgical common management.

KEYWORDS: maxillofacial fracture, maxillofacial injury, plastic surgery, trauma, retrospective

ARTICLE DETAILS

Published On:
16 December 2024

Available on:
<https://ijmscr.org/>

INTRODUCTION

Maxillofacial trauma remains a critical concern in the field of surgery due to the complexity of the injuries and the significant impact they have on both functionality and aesthetics. Maxillofacial fractures are among the most frequent reasons for emergency department visits that can lead to mortality and severe morbidity. Retrospective studies are

particularly useful in understanding injury trends, patient demographics, and treatment outcomes. Such insights are essential for developing targeted surgical approaches and improving the allocation of healthcare resources in hospitals.^{1,2,3}

Retrospective Study of Maxillofacial Traumatic Injury Pattern on Plastic Surgery Unit at Bali Mandara General Hospital

The data collected includes demographic information (age and gender), trauma patterns, associated injuries, and interventions performed. Age groups are categorized into seven groups: 0-10 years, 11-20 years, 21-30 years, 31-40 years, 41-50 years, 51-60 years, and over 60 years. Trauma patterns are classified into soft tissue injuries, panfacial fractures, fractures of the frontal bone, orbit, zygoma, zygomaticomaxillary complex (ZMC), maxilla, nasal bones, naso-orbitoethmoid (NOE) complex, mandible, palate, and alveolar bone. Maxillary fractures are further subdivided into maxilla unspecified, Le Fort I, Le Fort II, and Le Fort III types.

The associated injuries include intracranial haemorrhage, cranial base fractures, and injuries to the upper extremities, lower extremities, and trunk. The interventions documented include Open Reduction and Internal Fixation (ORIF), debridement, bone graft, wound suture, placement of an arch bar, nasal reposition, flap reconstruction, temporomandibular joint (TMJ) reposition, and skin graft. Ethical approval was obtained from Health Research Ethics Committee RSUD Bali Mandara with registration number 078/EA/KEPK.RSBM.DISKES/2024.

RESULTS

This study included 107 patients who underwent treatment for maxillofacial trauma in the plastic surgery departments during the study period; 76 (71.02%) are male and 31 (28.97%) female, with a male to female ratio of 2.45:1. In 2019, there were 29 cases of maxillofacial trauma (27.10%),

making it the year with the highest number of cases during the study period. The second-highest was in 2022, with 27 cases (25.23%), while 2020 had the fewest cases, with only 11 patients (10.28%) (Figure 3). Most of the patients were in the 21-30 age range, accounting for 27 patients (25.23%), followed by the 11-20 years age group with 25 patients (23.36%), and the 31-40 years age group with 19 patients (17.76%) (Figure 4). The average age of the patients was 32.26 ± 17.31 years, with a range from 1 to 83 years. Specifically, in 2020, the mean age was slightly higher at 32.90 ± 15.20 years, with a range from 13 to 57 years. Soft tissue injuries were the most common maxillofacial trauma, affecting 64 patients (29.63%), followed by maxillary fractures in 35 patients (16.20%). Other common injuries included fractures of the zygomaticomaxillary complex (ZMC) and orbital region (28 patients, 12.96%), as well as mandibular fractures (22 patients, 10.19%) (Figure 5).

Among the 35 cases of maxillary fractures, 10 (28.57%) were classified as Le Fort fractures, broken down as follows: Le Fort I (2 cases, 20%), Le Fort II (3 cases, 30%), Le Fort III (1 case, 10%), and combined Le Fort I-II (4 cases, 40%). In 2020, ZMC fractures were most prevalent (5 cases, 22.73%), followed by soft tissue injuries, orbital fractures, and maxillary fractures (4 cases each, 18.18%), and mandibular fractures (2 cases, 9.09%). The most common surgical management were ORIF (61; 28.64%) and debridement (54; 25.35%) (Figure 6). The most common associated injuries was upper extremity injuries (11; 30.56%), followed by lower extremity injuries (9; 25.00%) (Figure 7).

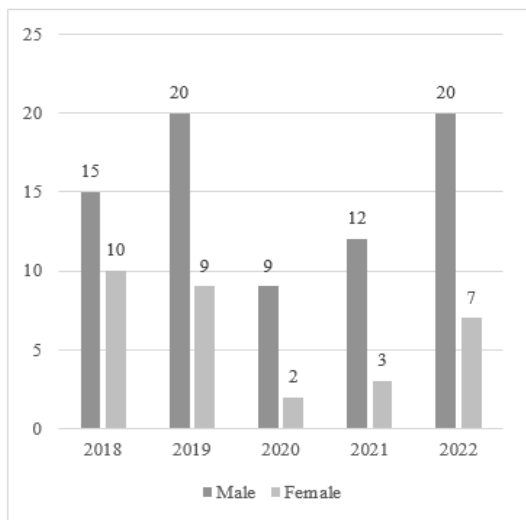


Figure 3. Gender wise distribution of maxillofacial injuries based on year

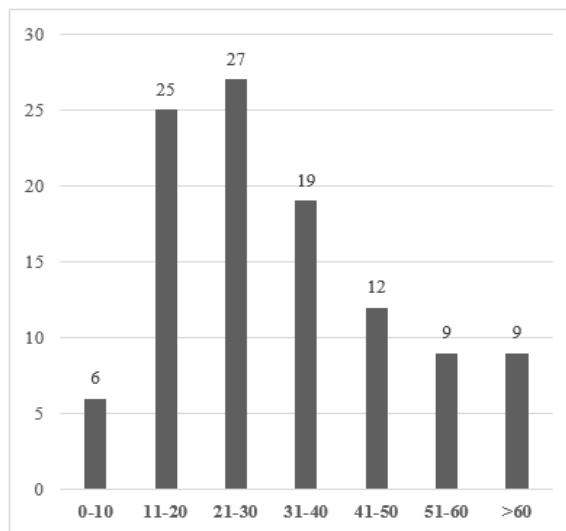


Figure 4. Age wise distribution of maxillofacial injuries

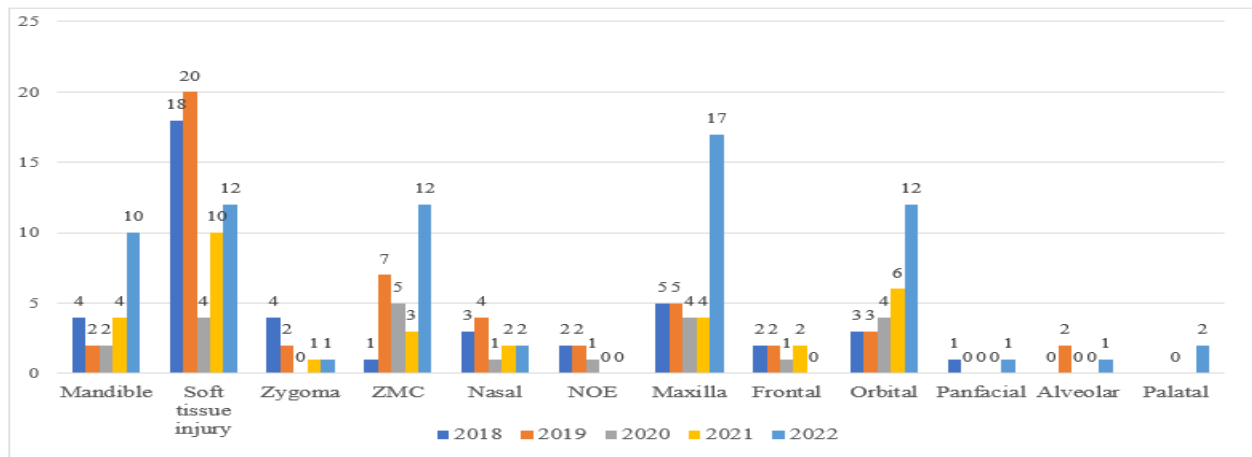


Figure 5. Anatomical distribution of maxillofacial trauma

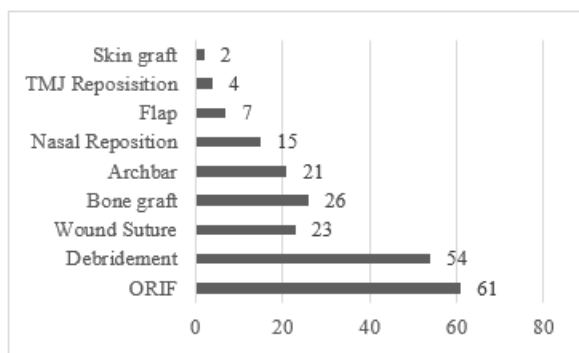


Figure 6. Treatment of maxillofacial injuries

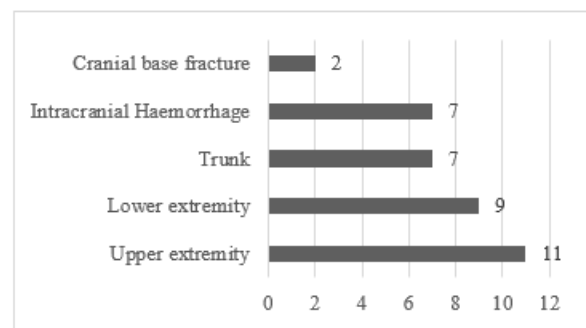


Figure 7. Distribution of associated injuries

DISCUSSION

Maxillofacial traumas are among the most frequent reasons for emergency department visits. Prompt diagnosis of maxillofacial trauma is crucial to identify associated injuries and urgent complications, plan the reconstruction of critical functions such as vision, chewing, and smelling, and support physical, psychological, and social recovery.⁹ In this study, we found a decline in maxillofacial trauma surgeries in 2020 compared to 2019 and 2021, attributed to the COVID-19 pandemic. These findings align with research by Putra et al. at Moewardi Hospital, Surakarta, which reported a decrease in plastic surgery cases, including maxillofacial trauma, during lockdown periods.¹⁰ The decline was caused by delays in elective surgeries and a reduction in emergency cases. Similar findings were reported by other researchers^{11, 12, 13, 14, 15, 16, 17, 18, 19, 20, 21, 22, 23}, all of whom noted decreased visits for plastic surgery during the COVID-19 pandemic.

However, study by Dawoud et al. observed an increase in maxillofacial trauma cases related to outdoor activities such as cycling and running, which were influenced by government policies encouraging outdoor activities to curb COVID-19 spread.²⁴ Furthermore, Setiawan et al.'s study at Dr. Soetomo Hospital, Surabaya, showed no decline in maxillofacial trauma cases in 2020 when compared to 2015 and 2016.²⁵ The study

also revealed that maxillofacial trauma consistently affected males more frequently than females, aligning with findings from many studies.^{10, 11, 12, 13, 14, 15, 16, 17, 18, 19, 20, 21, 22, 23, 25}

From 2018 to 2022, the most affected age group was 21–30 years, followed by 11–20 years and 31–40 years. However, in 2020, the predominant age groups shifted to 10–20 years and 41–50 years, each comprising 36.36% of cases (4 patients). These findings are consistent with previous research, such as the study by Pandey et al¹, which identified the 21–30 age group as the most affected, accounting for 39.98% (443 patients). Similarly, Setiawan et al. also reported that during the pandemic, the highest prevalence of maxillofacial trauma was in the 11–20 age group, followed by 21–30 years.²⁵

In this study, the average age of patients with maxillofacial trauma was 32.26±17.31 years. Specifically, in 2020, the average age was 32.90±15.20 years, with an age range of 13 to 57 years. These results are in agreement with findings from other studies. A study by Stanisce et al. reported an average patient age of 38 years before the pandemic and 41 years during the pandemic. Similarly, Dawoud et al. found that the average age of maxillofacial trauma patients was 33.21 years before the lockdown and 41.44 years during it. Paiva et al. observed a slight increase in the average age of plastic surgery patients from 38.8 years in 2019 to 41.8 years in 2020.

Retrospective Study of Maxillofacial Traumatic Injury Pattern on Plastic Surgery Unit at Bali Mandara General Hospital

Meanwhile, M. de Boutray et al. noted an average age of 38.9 years among 106 maxillofacial trauma patients during the lockdown. Infante-Cossio et al. also reported that the average age of maxillofacial trauma patients was 36.9 years before the pandemic and dropping to 32.8 years during the pandemic, with the majority of cases falling within the 20–39 age range.

In terms of injury types, this study found that soft tissue injuries were the most common, followed by fractures of the maxilla, zygomaticomaxillary complex (ZMC), and mandible. A study by Setiawan et al. reported that maxilla, mandible, zygoma, nasal, and naso-orbitoethmoid (NOE) fractures were the most frequent. Study by Ludwig et al. showed that malar, maxillary/zygomatic, nasal, orbital, and mandibular fractures were the most prevalent both before and during the pandemic. Press et al. similarly found that midface fractures were the most common, followed by fractures in the upper third of the face and mandible. However, several other studies present different findings. Several studies reported that mandibular fractures were the most frequent.^{13,18,24,26} Paiva et al., on the other hand, identified nasal, orbital, midfacial, and mandibular fractures as the most common.¹¹ This study found Le Fort II fractures to be the most prevalent type among maxillary fractures, which contrasts with Pandey et al., who reported that Le Fort I fractures were the most common.

The maxillofacial area, being one of the most prominent parts of the human body, is particularly vulnerable to injuries. More than 50% of patients with such injuries are reported to have multiple traumas, requiring collaborative care between emergency teams and surgical specialists. Maxillofacial injuries can occur as isolated cases or in combination with injuries to areas like the head, chest, abdomen, spine, or extremities (Guruprasad, 2014). In our study, maxillofacial trauma was most commonly associated with injuries to the upper and lower extremities

CONCLUSION

Young males were the most commonly affected group. Maxillary fractures were the most frequent type of maxillofacial injury and were often associated with upper extremity trauma. The most common surgical treatment was open reduction and internal fixation (ORIF). To our knowledge, this is the first study on maxillofacial injuries conducted at Bali Mandara General Hospital, which is a referral center and one of the few hospitals in Bali offering plastic surgery services. The findings may provide fundamental data for maxillofacial epidemiology research, as there is no previous study in Bali Mandara General Hospital. However, because the data used were collected retrospectively, and due to small sample size from single center, the result of this study is limited in its interpretation of the results and generalizability. Understanding the patterns of maxillofacial fractures is essential for improving

clinical decision-making and designing effective prevention strategies.

DISCLOSURE

Funding: No funding was acquired for the study's purposes.

Conflicts of interest: There are no conflict of interest.

REFERENCES

- I. Pandey, Sandeep, Ajoy Roychoudhury, Ongkila Bhutia, Maneesh Singhal, Sushma Sagar and Ravindra Mohan Pandey. "Study of the Pattern of Maxillofacial Fractures Seen at a Tertiary Care Hospital in North India." *Journal of Maxillofacial and Oral Surgery* 14 (2015): 32-39.
- II. Negussie, A. Getie, E. Manaye, and T. Tekle, "Prevalence and outcome of injury in patients visiting the emergency department of yirgalem general hospital, Southern Ethiopia," *BMC Emergency Medicine*, vol. 18, no. 1, 2018.
- III. J. M. S. Eidt, F. De Conto, M. M. De Bortoli, J. L. Engelmann, and F. D. Rocha, "Associated injuries in patients with maxillofacial trauma at the hospital s̃ao vicente de paulo, passo fundo, Brazil," *Journal of Oral & Maxillofacial Research*, vol. 4, no. 3, 2013.
- IV. K. Lee, "Global trends in maxillofacial fractures," *Craniofacial Trauma & Reconstruction*, vol. 5, no. 4, p. 213, 2012.
- V. Watanabe Koichi, Shoja MM., Loukas M, Tubbs R. Shane. *Anatomy for Plastic Surgery of the Face, Head, and Neck*. New York. 2016: 3
- VI. Nguyen JD, Duong H. StatPearls [Internet]. StatPearls Publishing; Treasure Island (FL): Aug 11, 2021. *Anatomy, Head and Neck, Cheeks*.
- VII. Chung Kevin C. Grabb and Smith's Plastic Surgery. *Facial Fractures and Soft Tissue Injuries*. In: Jones Christine M., Aalst John A. van. 8th ed. Wolters Kluwer. Philadelphia; 2019
- VIII. Mark W. Ochs, Myron R. Tucker, And Richard E. Bauer . *Management Of Facial Fractures*. Contemporary Oral And Maxillofacial Surgery. 2019
- IX. E. B. Tuna, M. Ozgen, A. B. Cankaya, C. Sen, and K. Gencay, "Oral rehabilitation in a patient with major maxillofacial trauma: a case management," *Case Reports in Dentistry*, vol. 2012, Article ID 267143, 5 pages, 2012.
- X. Putra MDP, Yarso KY, Saadhi I, Adinugroho Y. *Surgery Department during Coronavirus Disease 2019 Virus Lockdown: Multidepartment Experiences from Universitas Sebelas Maret*. Macedonian Journal of Medical Sciences. 2021 Jun 12; 9(E):437-442.

Retrospective Study of Maxillofacial Traumatic Injury Pattern on Plastic Surgery Unit at Bali Mandara General Hospital

- XI. Stanisce L, Fisher AH, Choi BY. How Did the COVID-19 Pandemic Affect Trends in Facial Trauma?. *Cranio-maxillofacial Trauma & Reconstruction* . USA. 2022
- XII. Vishal, Prakash O, Rohit et al. Incidence of Maxillofacial Trauma Amid COVID-19: A Comparative Study. *J. Maxillofac. Oral Surg. India*. 2020
- XIII. Lee DW, Choi SY, Kim JW et al. The impact of COVID-19 on the injury pattern for maxillofacial fracture in Daegu city, South Korea. *Maxillofacial Plastic and Reconstructive Surgery*. South Korea. 2021
- XIV. Pu JJ, McGrath CP, Leung YY, Choi WS, Yang W-f, Li KY and Su Y-x (2021) The Impact of Coronavirus Disease 2019 on the Disease Pattern of Oral and Maxillofacial Surgery Inpatients: A Comparative Study. *Front. Med.* 8:613663.
- XV. Paiva M, Rao V, Spake CSL et al. The Impact of the COVID-19 Pandemic on Plastic Surgery Consultations in the Emergency Department. *PRS Global Open*. USA. 2020
- XVI. Famà F, Lo Giudice R, Di Vita G, Tribst, JPM et al. A. COVID-19 and the Impact on the Cranio-Oro-Facial Trauma Care in Italy: An Epidemiological Retrospective Cohort Study. *Int. J. Environ. Res. Public Health* 2021, 18, 7066.
- XVII. Yang YT, Xing X, Sreekissoon S, Li Z. Impact of Transmission Control Measures on the Epidemiology of Maxillofacial Injuries in Wuhan City During the COVID-19 Epidemic. *J Craniofac Surg. China*. 2021;32: 1381–1384
- XVIII. Salvano G, Orabona GDA, Audino G et al. Have There Been any Changes in the Epidemiology and Etiology of Maxillofacial Trauma During the COVID-19 Pandemic? An Italian Multicenter Study. *Italy. J Craniofac Surg* 2021;32: 1445–1447
- XIX. Mir MA, Chattopadhyay D, Manohar N et al. The COVID-19 pandemic impact on clinical load of plastic and reconstructive surgery in a tertiary care hospital of north India: A retrospective comparative analysis. *Journal of Education and Health Promotion*. India. 2022
- XX. Hormozi AK, Habibzadeh Z, Yavari M et al. Impact of COVID-19 pandemic on plastic surgery activities and residency programs in a tertiary referral centre in Iran. *European Journal of Plastic Surgery*. Iran. 2021
- XXI. Ludwig DC, Nelson JL, Burke AB et al. What Is the Effect of COVID-19-Related Social Distancing on Oral and Maxillofacial Trauma?. *J Oral Maxillofac Surg. USA*. 2021. 79:1091-1097
- XXII. Press SG. What is the Impact of the 2020 Coronavirus Lockdown on Maxillofacial Trauma?. *J Oral Maxillofac Surg. USA*. 2021; 79:1329.e1-1329.e5.
- XXIII. Infante-Cossio P, Fernandez-Mayoralas-Gomez M, Gonzalez-Perez LM, Martinez-de-Fuentes R, Rollon-Mayordomo A, Torres-Carranza E. Impact of the coronavirus pandemic on maxillofacial trauma: A retrospective study in southern Spain. *Med Oral Patol Oral Cir Bucal*. 2022 May 1;27 (3):e223-9.
- XXIV. Dawoud BES, Alderson L, Khan U et al. The effect of lockdown during SARS-CoV-2 pandemic on maxillofacial injuries in a level I trauma centre: a comparative study. *Oral and Maxillofacial Surgery*. United Kingdom. 2021
- XXV. Setiawan RB, Wibowo MD. Profile of Patients with Maxillofacial Fracture in Emergency Department, Head-Neck Surgery Division, Dr. Soetomo Public Hospital Surabaya in 2020. *Ann Dent UM*. 2021, 28: 80-84
- XXVI. M. de Boutray, J.-D. Ku'n-Darbois, N. Sigaux, J.-C. Lutz, A. Veysiere, A. Sesque, C. Savoldelli, S. Dakpe, H. Bertin, B. Lallemand, A. Llobet, M. du Cailar, F. Lauwers, J. Davrou, J.-M. Foletti: Impact of the COVID-19 lockdown on the epidemiology of maxillofacial trauma activity: a French multicentre comparative study. *Int. J. Oral Maxillofac. Surg*. 2021; 50: 750–755.
- XXVII. Guruprasad, Yadavalli, O. R. Hemavathy, Girish B. Giraddi and Jayaprasad N. Shetty. "An assessment of etiological spectrum and injury characteristics among maxillofacial trauma patients of Government dental college and Research Institute, Bangalore." *Journal of Natural Science, Biology, and Medicine* 5 (2014): 47 - 51.